

DP 5 - 2010



Oil Per Board: **40 uL** Oil Pattern Distance: **40 Feet** Volume Oil Total: **18.64 mL** Total Boards Crossed: **466 Boards**

Forward Oil Total: **12.08 mL** Reverse Oil Total: **6.56 mL**
 Forward Boards Crossed: **302 Boards** Reverse Boards Crossed: **164 Boards**

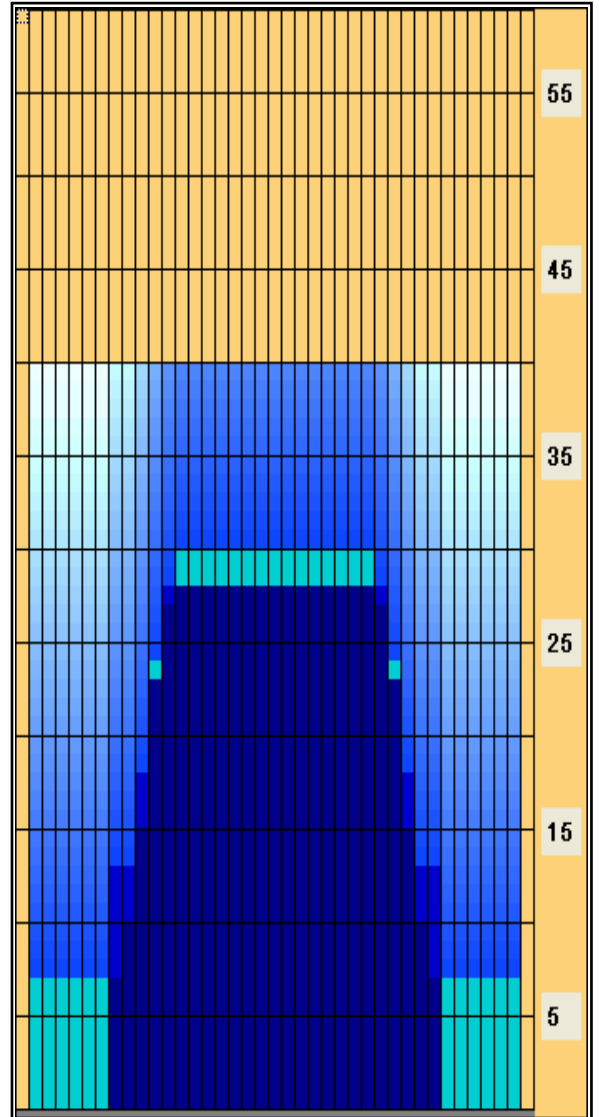
Notes:

Report Date
1/18/2010

Conditioner:
Type In or Select One

TransferType:
Type In or Select One

Forward Oil
Reverse Oil
Combined Oil
Buff Area



	Start	Stop	Loads	Speed	Crossed	Start	End	Feet	T.Oil
1	2L	2R	4	18	148	0.0	7.6	7.6	5920
2	9L	9R	1	18	23	7.6	10.1	2.5	920
3	10L	10R	2	18	42	10.1	15.2	5.1	1680
4	11L	11R	3	22	57	15.2	24.5	9.3	2280
5	12L	12R	1	22	17	24.5	27.6	3.1	680
6	13L	13R	1	22	15	27.6	30.7	3.1	600
7	2L	2R	0	22	0	30.7	40.0	9.3	0

	Start	Stop	Loads	Speed	Crossed	Start	End	Feet	T.Oil
1	2L	2R	0	26	0	40.0	28.0	-12.0	0
2	12L	12R	2	18	34	28.0	22.9	-5.1	1360
3	11L	11R	2	18	38	22.9	17.8	-5.1	1520
4	10L	10R	2	18	42	17.8	12.7	-5.1	1680
5	8L	8R	1	18	25	12.7	10.2	-2.5	1000
6	8L	8R	1	14	25	10.2	8.3	-1.9	1000
7	2L	2R	0	14	0	8.3	0.0	-8.3	0

Arrow Zone Ratios

Item	2-5L:16L-20	6-10L:16:-20	11-15L:16L-20	16L-20:20-16R	16L-20:20-16R	20-16R:15-11R	20-16R:10-6R	20-16R:5-2R
ul Arrow	160	256	760	800	800	760	256	160
Zone Ratio	5	3.13	1.05	1	1	1.05	3.13	5

Track Zone Ratios

Item	3L-7L:18L-18R	8L-12L:18L-18R	13L-17L:18L-18R	18L-18R:17R-13R	18L-18R:12R-8R	18L-18R:7R-3R
Description	Outside Track:Middle	Middle Track:Middle	Inside Track:Middle	Middle: Inside Track	Middle:Middle Track	Middle:Outside Track
Track Zone Ratio	5	1.69	1	1	1.69	5

